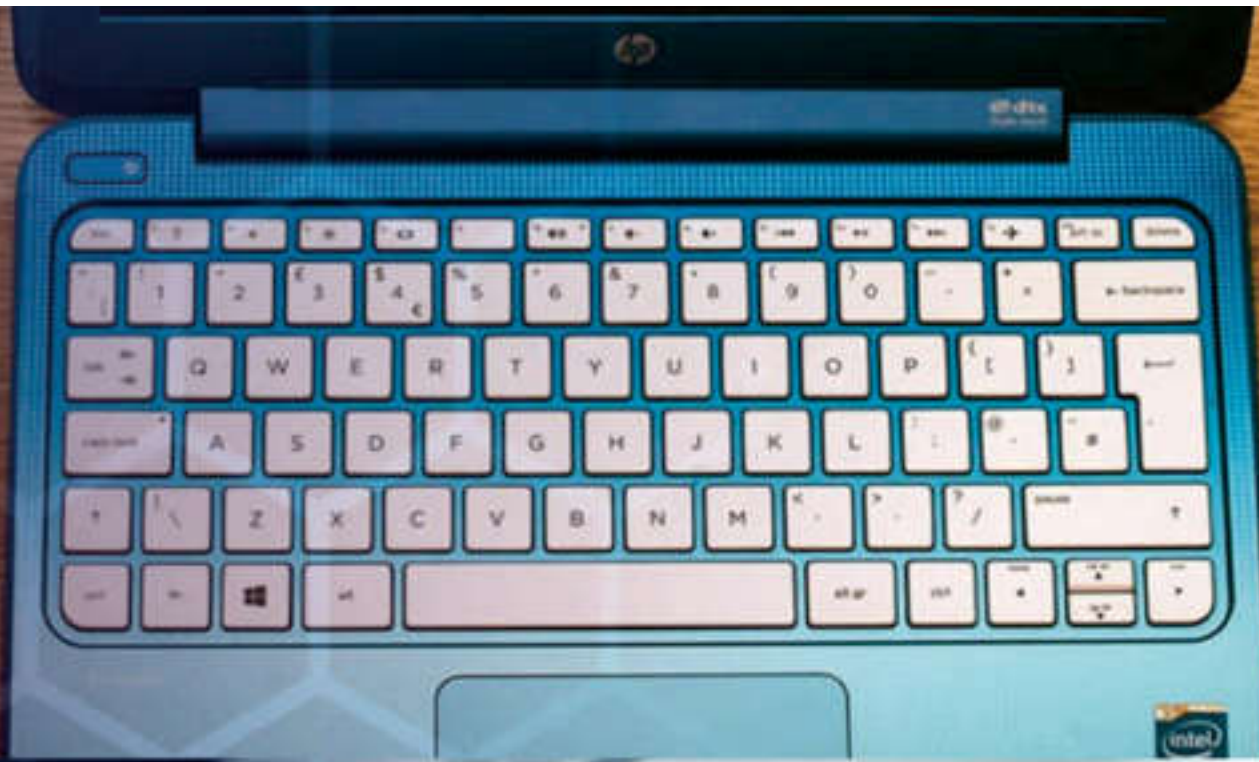




## CASE ANALYSIS

3C PARTS  
AUTO PARTS  
MEDICAL APPARATUS



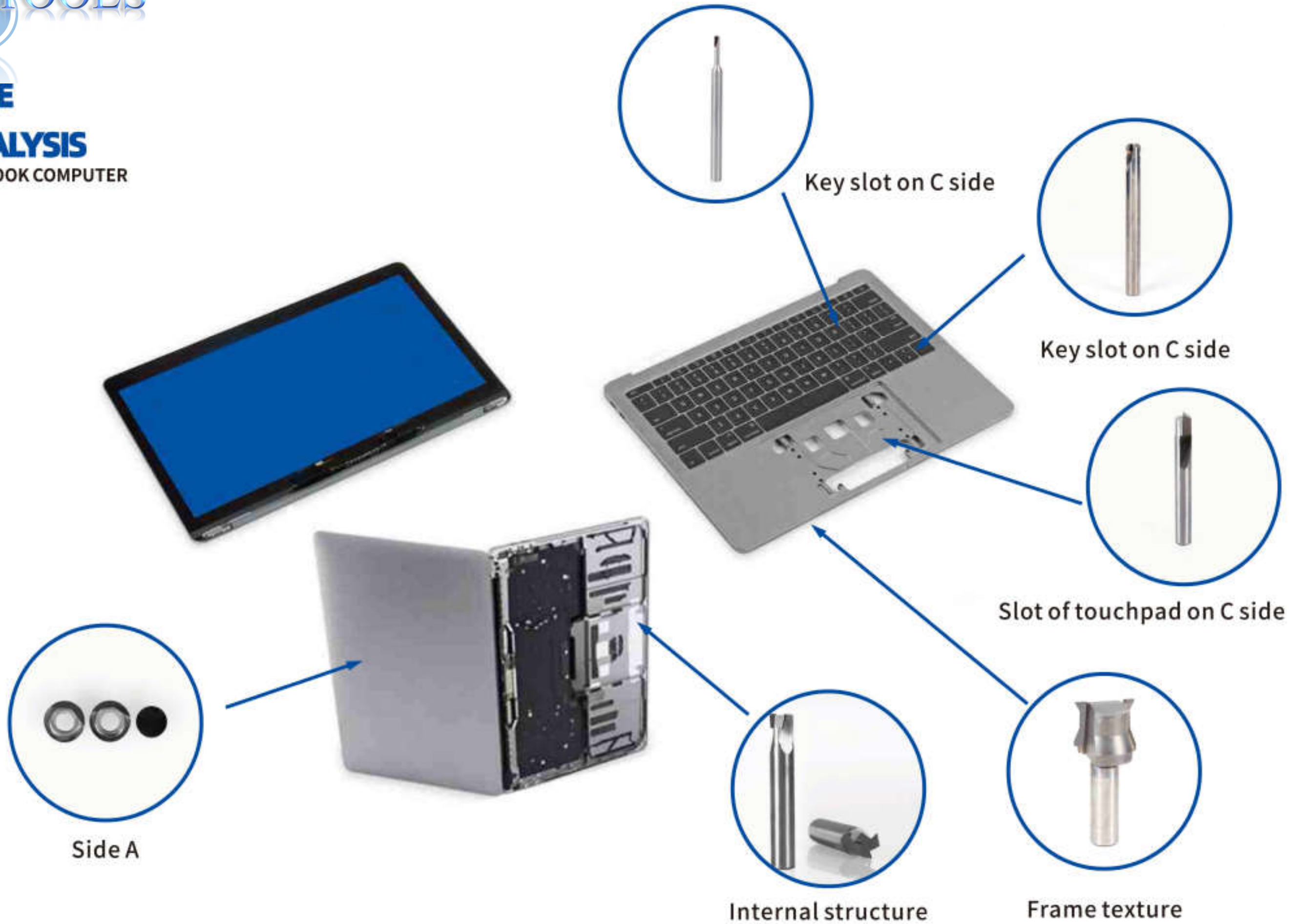
## CASE ANALYSIS MOBILE PHONE



## CASE

## ANALYSIS

NOTEBOOK COMPUTER



**CASE**  
**ANALYSIS**  
AUTO PARTS



Shell of gearbo



Cylinder cap



Steering gear



Transmission valve



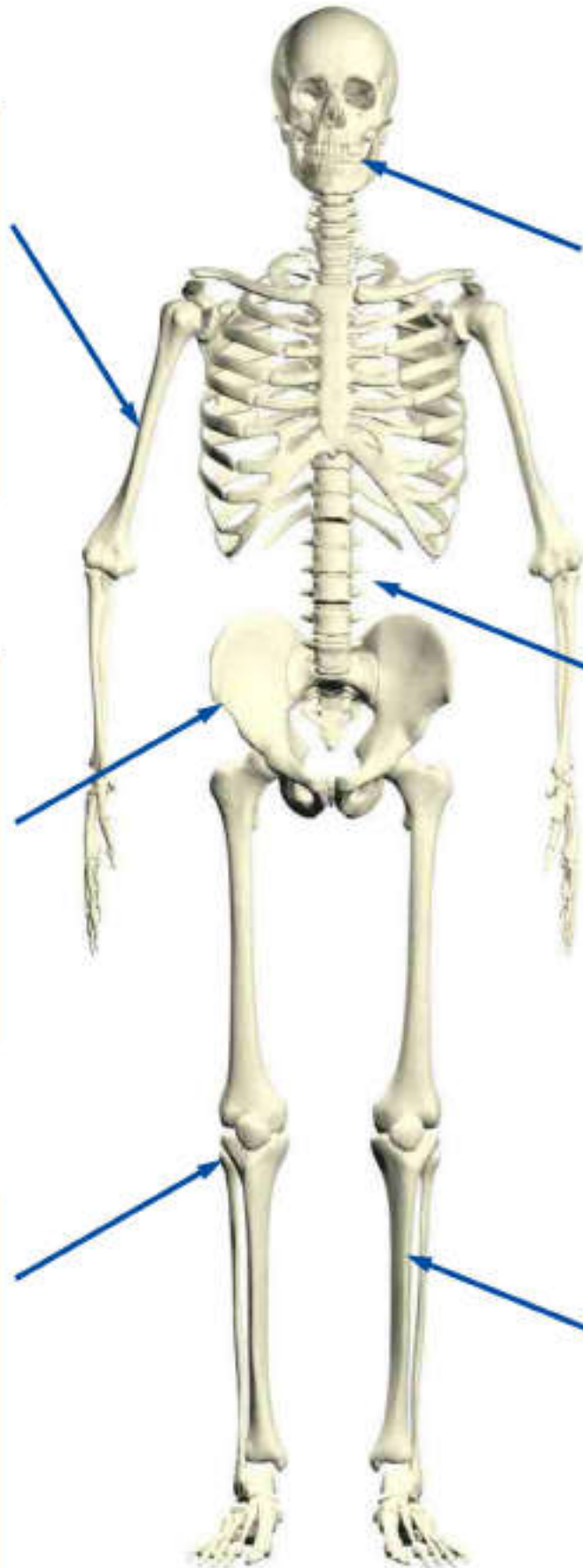
## CASE ANALYSIS

### MEDICAL APPARATUS



### BONE SCREW

PROSTHETIC MATERIAL: Cobalt alloy  
Stainless steel  
APPLICABLE TOOL: Deep hole drill



### TOOTH BONE SCREW

PROSTHETIC MATERIAL: Cobalt alloy  
APPLICABLE TOOL: Turning tool  
Micro diameter milling tool  
End milling tool  
Boring tool



### HIP JOINT

PROSTHETIC MATERIAL: Cobalt alloy  
Titanium alloy  
APPLICABLE TOOL: Turning tool  
End milling tool  
Ball end milling tool  
Boring tool



### SPINAL IMPLANT

PROSTHETIC MATERIAL: Cobalt alloy  
APPLICABLE TOOL: End milling tool



### KNEE JOINT

PROSTHETIC MATERIAL: Cobalt alloy  
APPLICABLE TOOL: Turning tool  
End milling tool  
Ball end milling tool  
Boring tool



### BLADE PLATE

PROSTHETIC MATERIAL: Titanium alloy  
Stainless steel  
APPLICABLE TOOL: Ball end milling tool